



**VEIMART**  
WATER GUARD

**EVERY DAY THERE ARE HUNDREDS  
CASES OF  
WATER-  
DAMAGE**



**GET PEACE OF MIND  
WITH OUR NEW PRODUCT!**

Now you can sleep easy! The Veimart water guard is always active preventing typical water damage in the domestic tap water plumbing. You don't have to do anything after the simple initial setup!

The Veimart system is ideal for new houses and for retrofitting in old houses!

[www.veimart.fi/en](http://www.veimart.fi/en)

# A PATENTED INNOVATION

It is important to protect your home from water damage. That is why Veimart exists.

The Veimart system prevents water damage from the water network in a brilliantly simple and secure way: it automatically keeps the main valve closed whenever water is not used.



MADE IN  
 FINLAND



The Veimart system is ideal for new houses and for retrofitting in old houses!

## CAREFREE

The water guard is always active after the Veimart system has been installed. It couldn't be more simple than that!

## ACCURATE

The Veimart system notices even the smallest leakages. Even one drop every few minutes triggers the water guard.

## EASY TO INSTALL AND USE

All you need is a wall socket and 160 mm room in your plumbing to get the Veimart unit working. Power connections are done with plug connectors. You won't need a thick manual. The device is always active!

## SAFE

In Away mode the main valve is always closed. So you don't need to worry if you are on holiday.

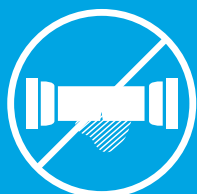
## COST-EFFECTIVE

The Veimart system is a very small investment considering the risks. In addition the Veimart unit guides you towards more frugal water consumption if you set the maximum flow time to e.g. 5 minutes.

## VEIMART PREVENTS



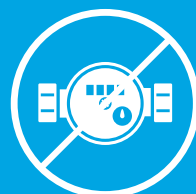
JOINT  
 LEAKAGE



DRIPPING  
 LEAKAGE



LEAKING  
 TAPS



ABNORMAL  
 WATER  
 CONSUMPTION



LEAKING  
 TOILET BOWLS

# SIMPLY EASY TO USE

## Test

A leakage test is performed by pressing the Test button (the water guard's delay is ignored).

## Extra time

Extends the maximum time of water flow by 0-4 h. Can be use e.g. when watering the lawn.



## Reset

Reset button for alarms. Wired remote reset button also available (accessory).

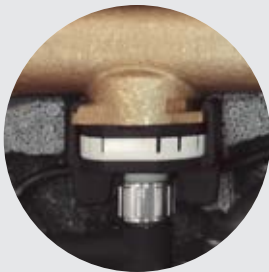
## Away

Stops water from flowing in all situations. An external Away switch can be installed e.g. into the entrance or on the side of the door, with the accessory VMEX-10.

## Maximum time

The maximum time allowed for continuous water flow (5-25 minutes). If the time is exceeded the water is cut off and the alarm needs to be reset.

## HOW DOES THE VEIMART SYSTEM WORK?



### Flow sensor

Instantly reacts to an opened tap and gives a command to the solenoid valve.



### Solenoid valve

Keeps the water mains closed when water is not being used. If there is an alarm, it will not open without a reset



### Expansion tank

The 1.6 dl of water in the tank is drained out if there is a leakage. In this case the solenoid valve will not open without a reset.

## ABOUT VEIMART

Everyone has heard horror stories about the effects of water damage. There are health issues and sudden allergies. There are rotten floors and mouldy walls. To top it all off, one worries endlessly about who is supposed to pay for it all.

After working for decades in building services engineering **Veijo Laurila** was very much aware of this issue. Based on his ideas and experience, the patented operating principle of the Veimart system was born, and he introduced it to **Martti Jokelainen**. For Jokelainen, who has years of experience in product development and business management, the challenge was familiar: the product needed to be fail-safe, easy to use and affordable to purchase and use. Veimart's goal was to bring peace of mind to their customers. You no longer need to fear a hidden leak that can destroy one's home and health. The goal was always to create the best possible product that we could be proud of. This is how Veimart was born.





# 10 REASONS TO GET A VEIMART SYSTEM

- 1 PREVENTS MOST TYPICAL WATER DAMAGE CAUSED BY LEAKAGE
- 2 RECOGNISES ABNORMAL WATER CONSUMPTION
- 3 RECOGNISES LEAKING TOILET BOWLS
- 4 THE AWAY FEATURE PREVENTS WATER DAMAGE IN ALL SITUATIONS
- 5 GIVES YOU PEACE OF MIND - ALWAYS ON
- 6 REDUCES THE DAMAGE IN THE PLUMBING CAUSED BY WATER HAMMERS
- 7 EASY TO INSTALL AND USE
- 8 CAN BE CONNECTED TO YOUR HOME AUTOMATION SYSTEM
- 9 LEAKAGE SENSORS ALSO AVAILABLE
- 10 DECREASES UNNECESSARY USE OF WATER

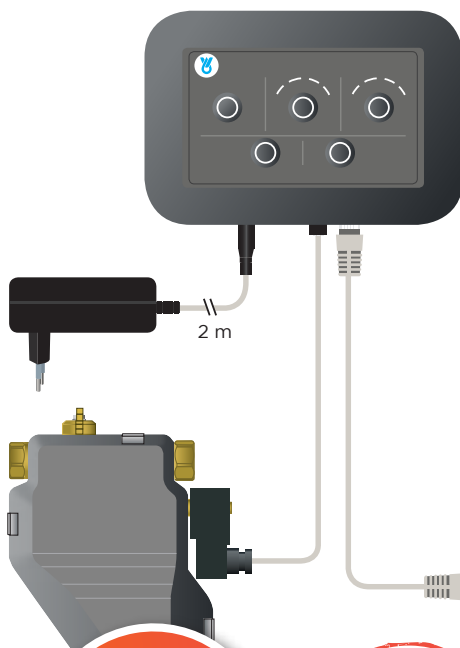
CALCULATION EXAMPLE FROM FINLAND

**SAVE WATER WITH VEIMART!**

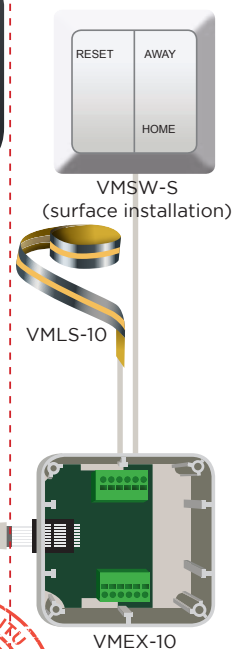
**3 PERSONS** IN A FAMILY  **3 SHOWERS** EVERY DAY 

**BEFORE** 15 min/shower      **200 m<sup>3</sup>/year**  
**AFTER** 7.5 min/shower      **100 m<sup>3</sup>/year** =  **600 EUROS SAVING PER YEAR!**

## VM-10 BASIC PACKAGE



## ACCESSORIES



## SPECIFICATIONS

### WATER GUARD

Product code, Approvals VM-10 CE EN-55022, LVD   FINANSSIALA

### WATER GUARD BODY

Material Brass that can resist dezincification  
 Space needed for installation 160 mm  
 Input terminal 3/4" male thread with gasket  
 Output terminal 22 mm compression coupling  
 Weight 2.75 kg  
 Dimensions 240 x 200 x 115 (with insulation protection), Installation direction can be chosen freely

### CONTROL UNIT

Width x height x depth 130 x 90 x 38  
 Operating voltage 24 VDC (Socket transformer with 2 m cord)  
 Connecting cable 2 m, plug-in connection

### ACCESSORIES

Extension cable for the control unit 5 m  
 Extension cable for the control unit 10 m  
 Extension cable for the control unit 20 m  
 Extension unit  
 Leakage sensor  
 Switch (surface installation)  
 Water meter connector (incl. one-way valve)

### Product code

VMC-5  
 VMC-10  
 VMC-20  
 VMEX-10  
 VMLS-10  
 VMSW-S  
 VM-3/4UKx1SK

Country of manufacture Finland  
 Warranty 2 years



**LEARN MORE:**  
[veimart.fi/en](http://veimart.fi/en)

